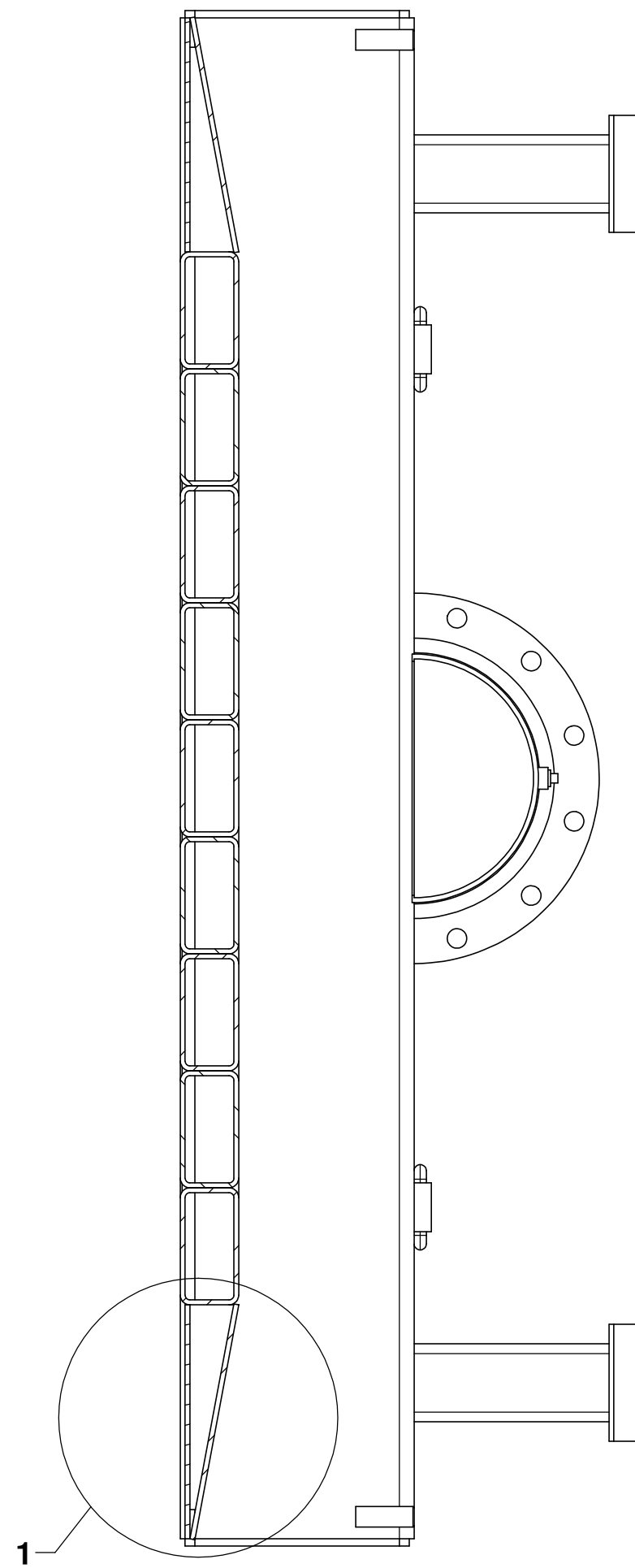
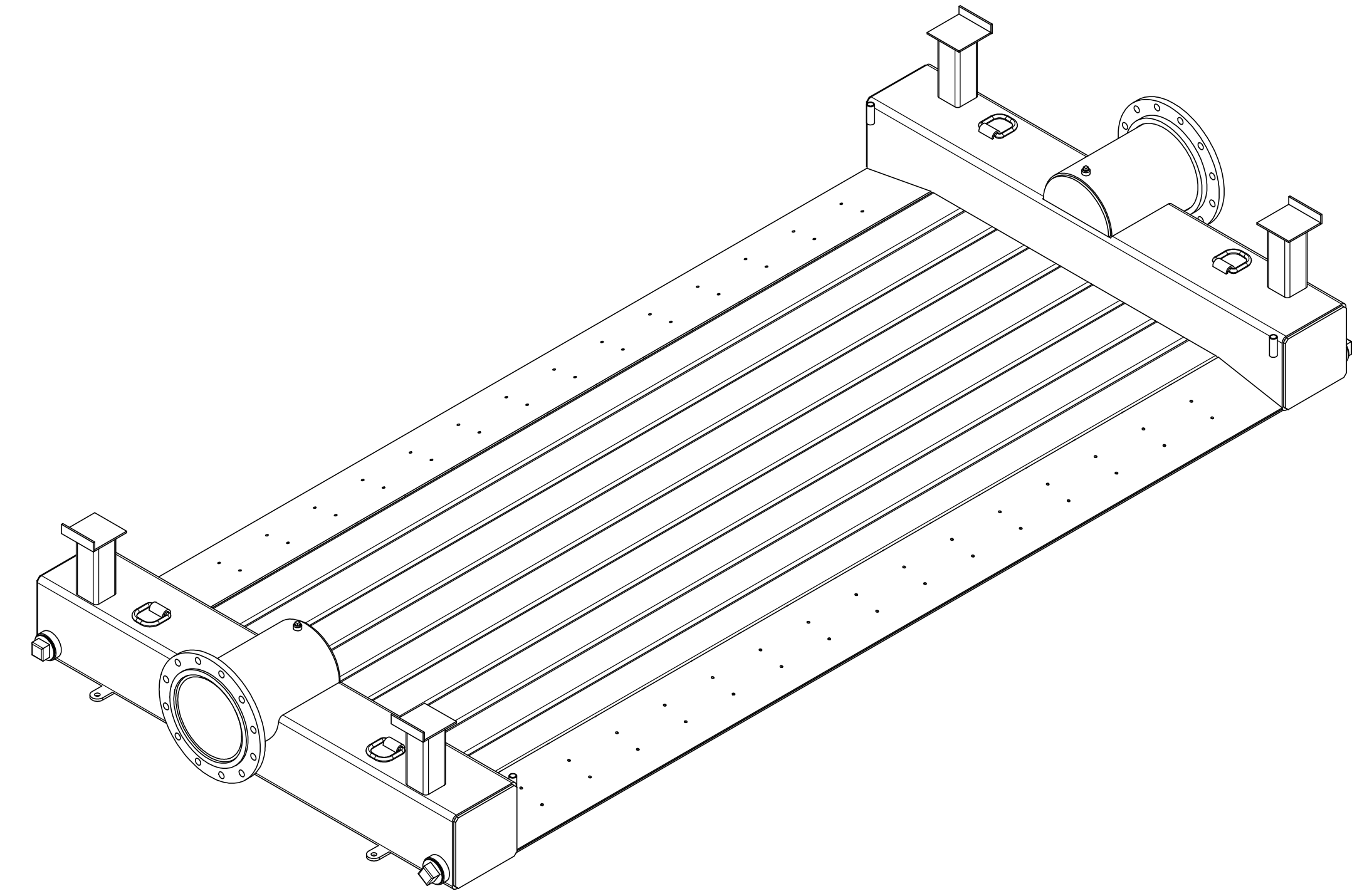
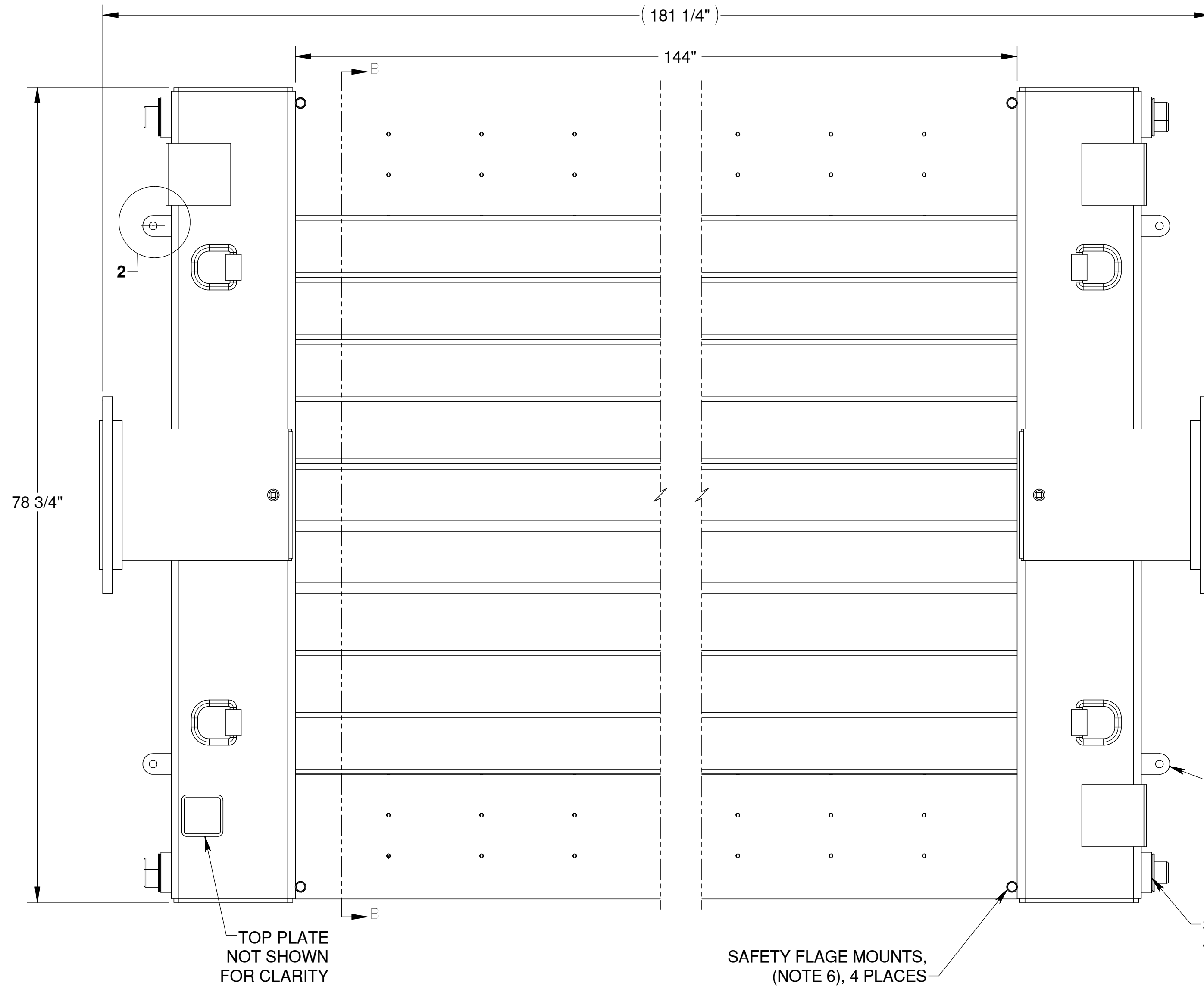


DETAIL 2
SCALE 1 : 4
4 PLACES



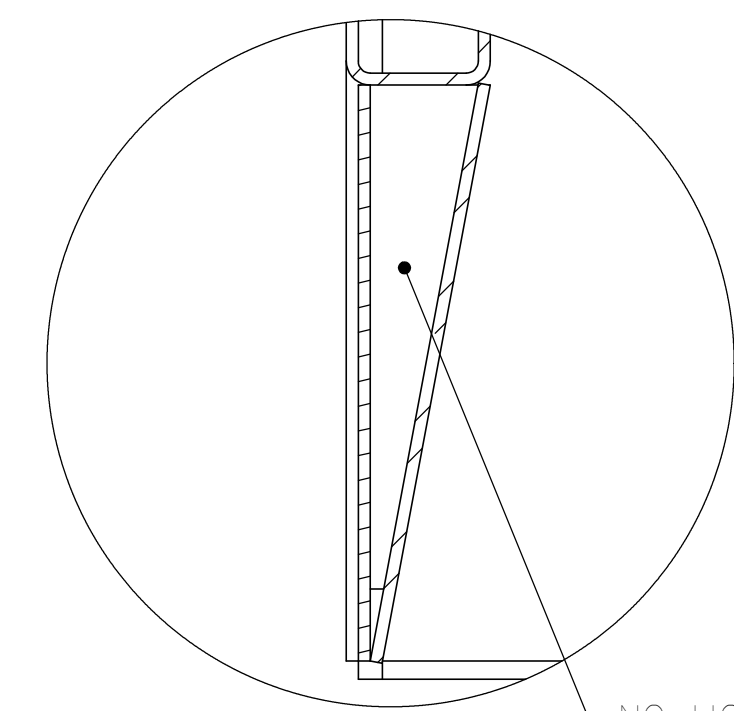
SECTION B-B



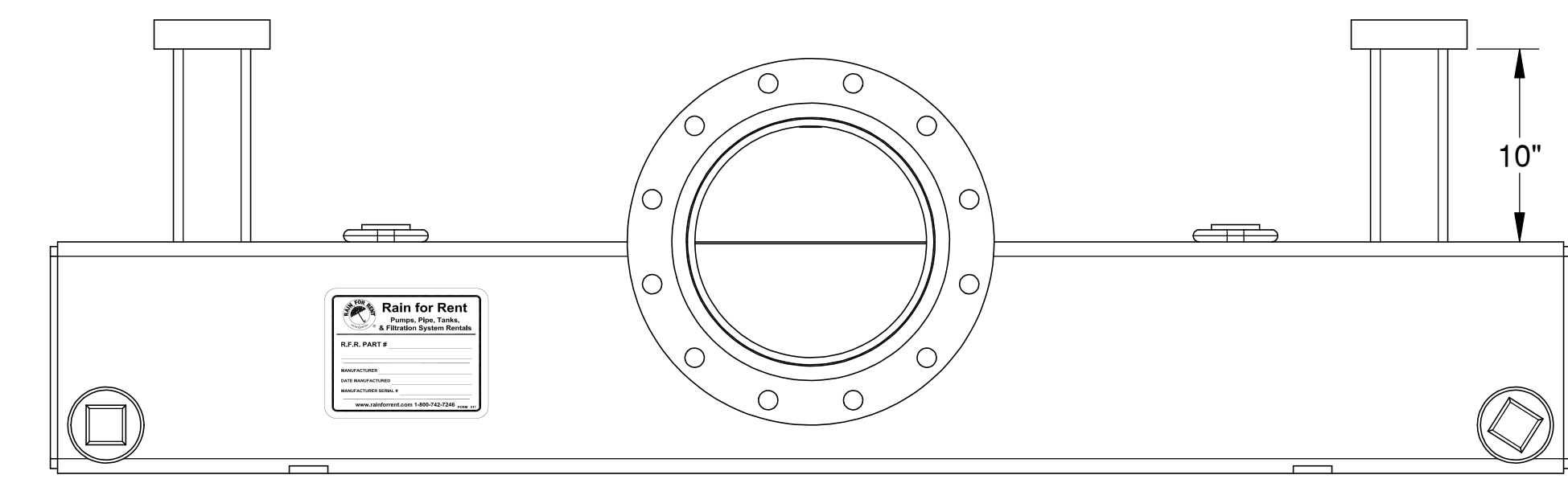
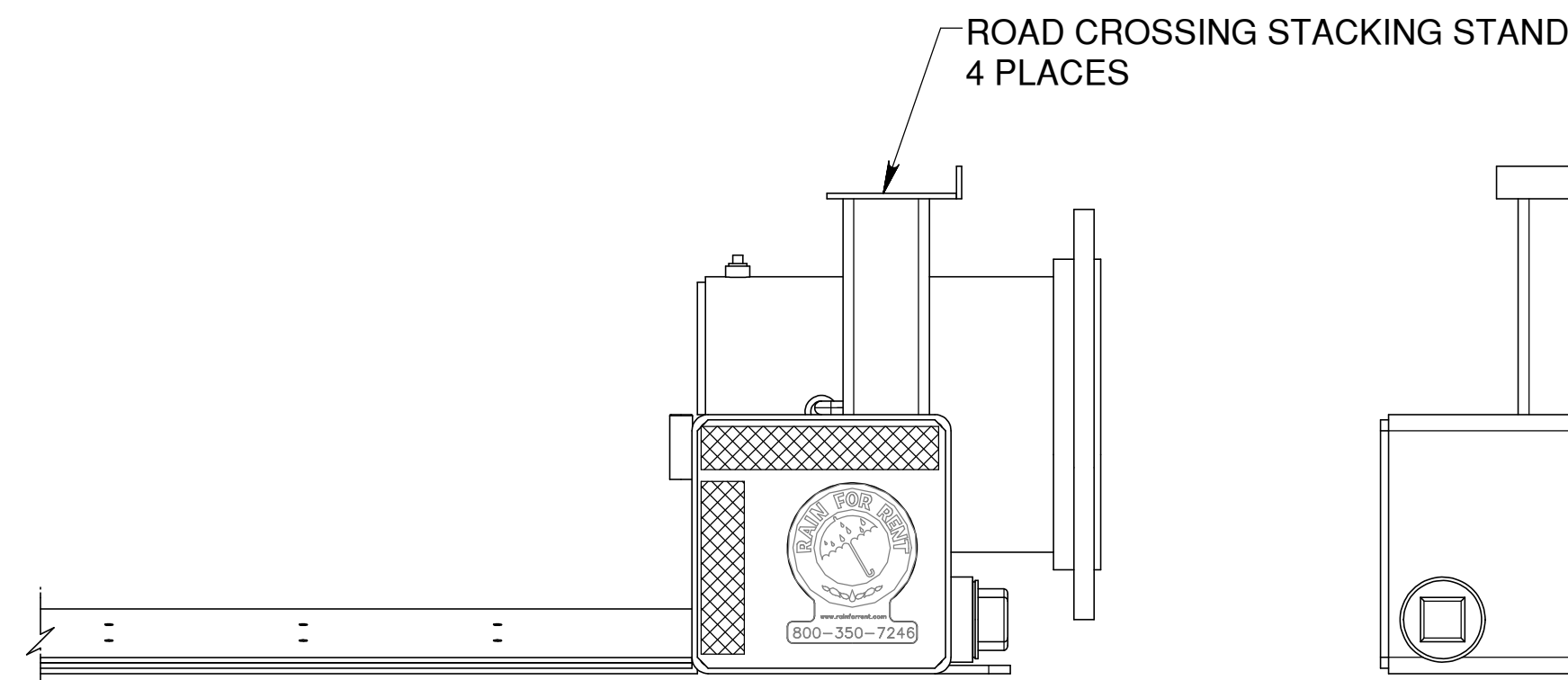
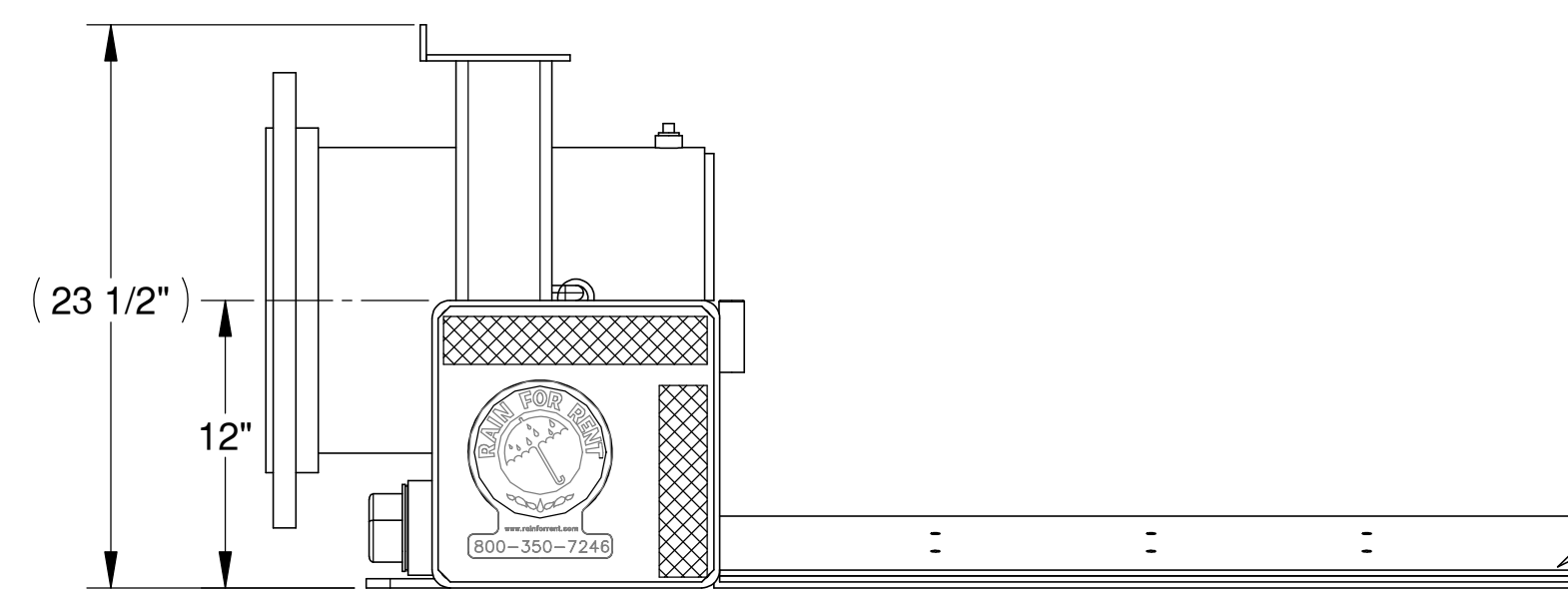
ISOMETRIC VIEW
NOT TO SCALE

NOTE:

1. MANUFACTURE GALVANIZE IN ACCORDANCE WITH ASTM A 384 & A 385 STANDARDS.
2. MANUFACTURE ADD WHITE OR ORANGE D.O.T. REFLECTOR TAPE AS INDICATED ON SQUARE TUBING. (GRAINGER PART # - WHITE 1F017 - ORANGE 1F019 OR EQUIVALENT)
3. MANUFACTURE PLACE A 6" RAIN FOR RENT LOGO STICKER WITH 1-800 NUMBER, FORM #437, AS INDICATED. (DECAL SUPPLIED BY RAIN FOR RENT WHEN ROADCROSSING IS ORDERED)
4. MANUFACTURE PRESSURE TEST BEFORE AND AFTER GALVANIZING WITH WATER AT 112 PSI FOR MINIMUM OF 5 MINUTES TO CHECK FOR LEAKS.
5. WORKING PRESSURE 75-PSI MAX.
6. MOUNTING POINTS FOR STANDARD SAFETY WARNING FLAGS, (GRAINGER ITEM #4A415, 18" X 18" RED/ORANGE WITH 3/4" DIAMETER DOWEL OR EQUIVALENT), (MANUFACTURE SUPPLY WITH ROAD CROSSING)
7. MANUFACTURE STAMP WEIGHT, APPROXIMATE WEIGHT - 3,000 LBS. EMPTY.
8. MAINTAIN FLANGE SURFACE.
9. MANUFACTURE PLACE DECAL (FORM #511) AND STAMP ASSEMBLY WITH MANUFACTURE NAME AND DATE ASSEMBLY WAS MANUFACTURED. (DECAL SUPPLIED BY RAIN FOR RENT WHEN ROADCROSSING IS ORDERED)
10. CONTACT RAIN FOR RENT ENGINEERING DEPARTMENT FOR APPROVAL BEFORE CHANGES IN DESIGN.
11. ALL WELDS MUST COMPLY WITH AMERICAN WELDING SOCIETY WELD CODE AWS STRUCTURAL D1.1
12. TOUCH-UP WITH ORGANIC ZINK-RICH PAINT COMPLYING WITH MIL-P-21035B OR MIL-P-26915C IN MULTIPLE COATS.



DETAIL 1
SCALE 1 : 4
ANGLE/FLAT BAR WELDMENT

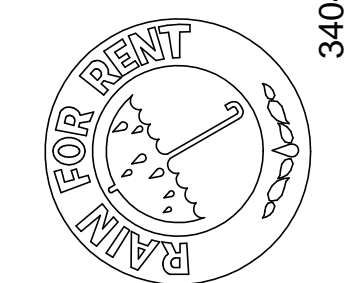


REV. NO.	DESCRIPTION	DATE	BY	DATE
3	ADDED NOTES AND CHANGED 1/4X12X12 END CAPS TO 3/8X12X12	103011-1_2	MS	3/24/2004
2	CHANGED 1/4" WALL ON 12X12 TUBE TO 3/8" WALL	103011-1_2	MS	3/23/2004
1	CHANGED OVERALL DESIGN	103011-1_2	MS	12/11/2003
		PREV.DWG	BY	DATE

12" X 12' ROAD CROSSING

SALES / REFERENCE DRAWING

Rain For Rent
Engineering



3404 State Road PO Box 2248 Bakersfield CA 93303

ALL INFORMATION CONTAINED IN OR DISCLOSED BY THIS DOCUMENT IS CONSIDERED CONFIDENTIAL AND PROPRIETARY BY RAIN FOR RENT. ALL DISCLOSURES OF DESIGN INFORMATION AND REPRODUCTION OF THIS DOCUMENT AND ALL SALES RIGHTS ARE EXCLUSIVELY RESERVED BY AND TO RAIN FOR RENT AND COMMUNICATION OF THIS INFORMATION TO OTHERS IS PROHIBITED WITHOUT THE PRIOR WRITTEN CONSENT OF RAIN FOR RENT.

DATE	SCALE
10/20/2003	1:8
DESIGNED BY	
K.KROSS	
CHECKED BY	
K.KROSS	
DRAWN BY	
M.STEVENSON	
JOB NUMBER	
1021213	
DRAWING NUMBER	
103011-1_2	
SHEET	SHT. SIZE REV. NO.
1 OF 1	D 3