

# Road Crossing

8" x 12'

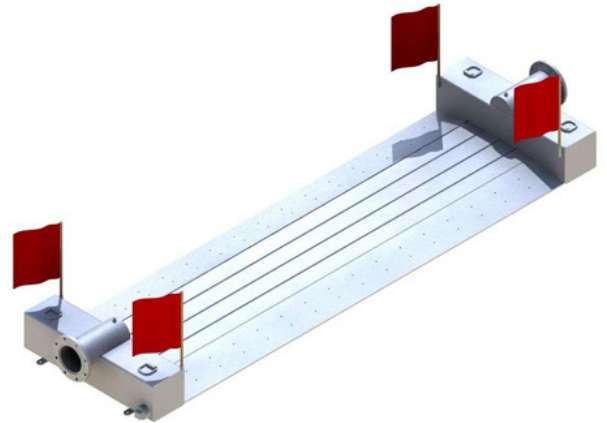
Part of the WORKSAFE™ family of products

## Overview:

Keep pedestrian and vehicle traffic moving during your bypass by using our safety-focused Road Crossing. This galvanized steel is engineered to provide minimal head-loss when using on pumping projects. Each Road Crossing is manufactured to remain in compliance with federal bridge laws of 20,000 lbs. Single Axle.

## Features:

- The Road Crossing requires full ground contact in the tire zone and allows for a working pressure up to 75 PSI.
- Sloped entrance and exit ramps.
- Designed for high flow rates
- 3" cleanouts/drains.

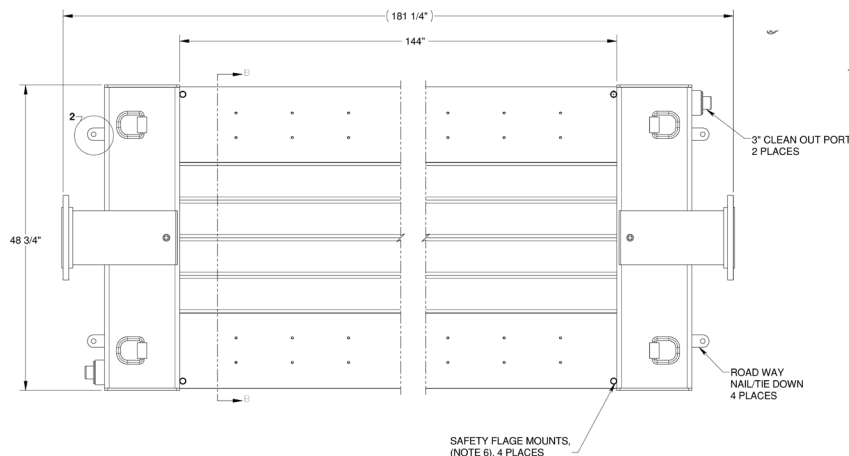


## Specs:

Footprint	48.75" x 181.25"
Dry Weight	1,975 lbs.
Workable PSI	75
Vehicle Width Clearance	12 feet
Connection	8 inch flange

## Accessories:

- Aluminum pipe and fittings
- Pressure gauges
- Wheel Wash system



**Liquid Ingenuity®**  
800-742-7246  
rainforrent.com

**PUMPS • TANKS • FILTRATION • PIPE • SPILLGUARDS**

THE SPECIFICATIONS CONTAINED IN THIS SHEET ARE OPERATING GUIDELINES AND ARE INTENDED TO BE GENERAL REPRESENTATIONS OF EQUIPMENT CAPABILITIES. ACTUAL PERFORMANCE WILL VARY BASED UPON SYSTEM APPLICATION, AGE OF EQUIPMENT, MANUFACTURER, AND OPERATION.