

Ag/Clear Water Pump

6RB

Overview:

The 10" suction x 6" discharge centrifugal clear water 6RB pump provides up to a maximum of 4,200 gallons per minute pumping and up to 300 feet of head. This high-performance, low-maintenance pump is usually mounted on a trailer for ease of use.

Features:

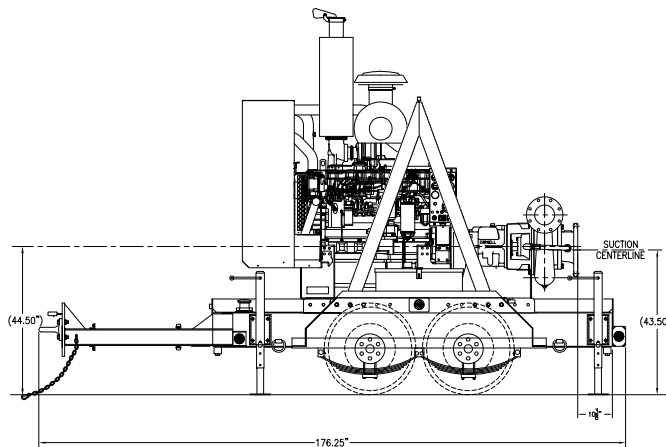
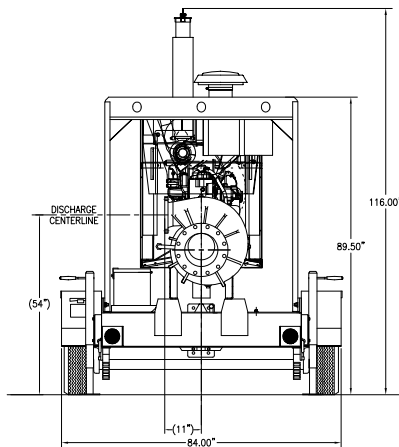


Specs:

Maximum Flow	4,200 GPM
Maximum Head	300 feet
Pump Size	10" x 6"
Maximum Solids Handling	1.31 inches
Dry weight	
Footprint	177" x 84"

Accessories:

- Spillguard
- Suction and Discharge Hoses
- Fuel Nurse Tank
- VFD for electric driven models



PUMPS • TANKS • FILTRATION • PIPE • SPILLGUARDS

Rain for Rent is a registered trademark of Western Oilfields Supply Company. Features and specifications are subject to change without notice.

Liquid ingenuity.™

800-742-7246
rainforrent.com



Rain For Rent

CURVE: 01-0133-02-51

PUMP : 6RB

IMPELLER 13.5" IMPELLER & WEAR RINGS BRASS

ALL INFORMATION CONTAINED IN OR DISCLOSED BY THIS DOCUMENT IS CONSIDERED CONFIDENTIAL AND PROPRIETARY BY RAIN FOR RENT. ALL DISCLOSURES OF DESIGN INFORMATION AND REPRODUCTION OF THIS DOCUMENT AND ALL SALES RIGHTS ARE EXCLUSIVELY RESERVED BY AND TO RAIN FOR RENT AND COMMUNICATION OF THIS INFORMATION TO OTHERS IS PROHIBITED WITHOUT THE PRIOR WRITTEN CONSENT OF RAIN FOR RENT

SUCTION 10"

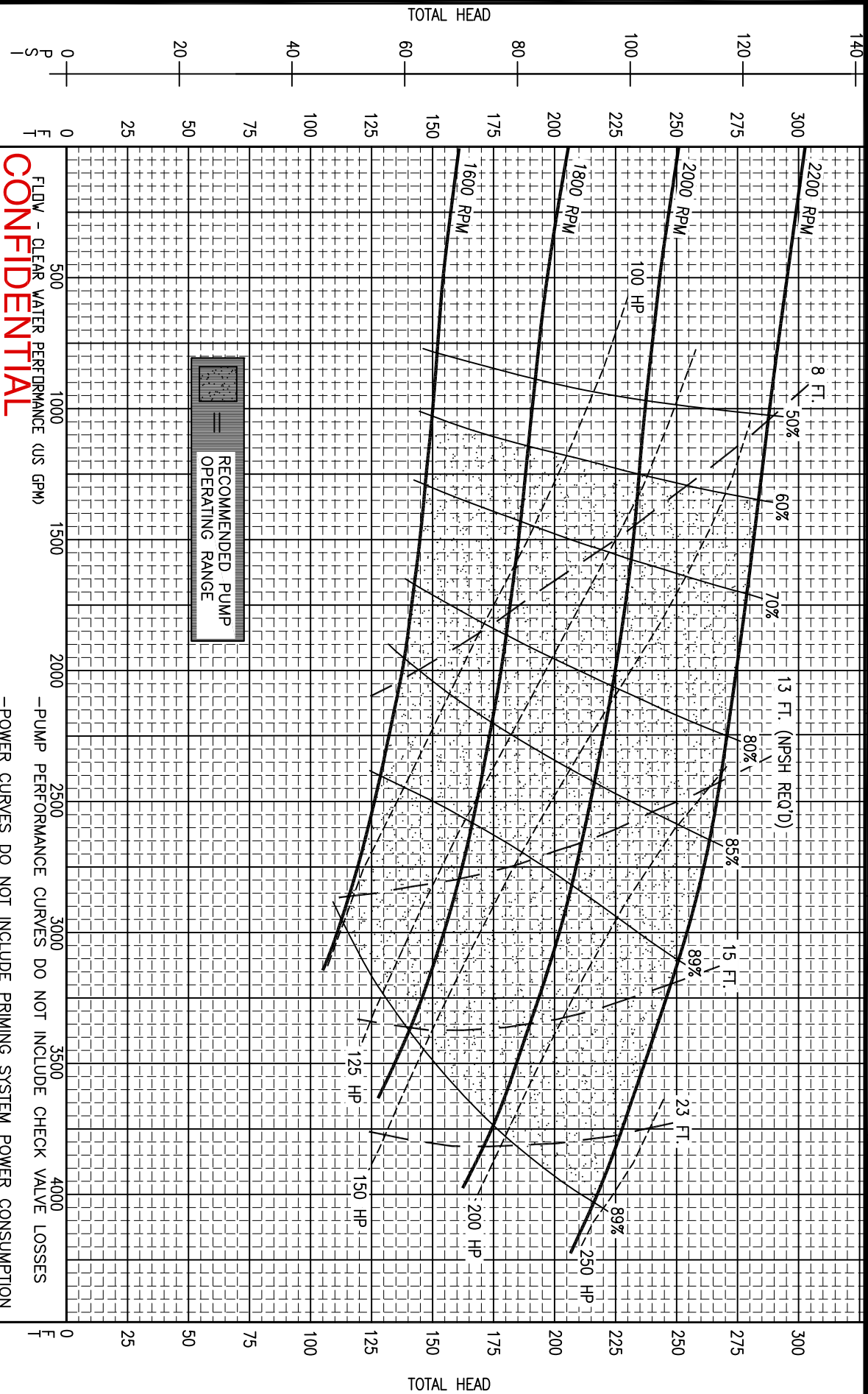
DISCHARGE 6"

MAX. SPHERE 1.31"

IMPELLER 6 VANE

IMPELLER 13.5"

IMPELLER & WEAR RINGS BRASS



FLOW - CLEAR WATER PERFORMANCE (US GPM)

CONFIDENTIAL

-PUMP PERFORMANCE CURVES DO NOT INCLUDE CHECK VALVE LOSSES
-POWER CURVES DO NOT INCLUDE PRIMING SYSTEM POWER CONSUMPTION