

Road Crossing

8" x 12'

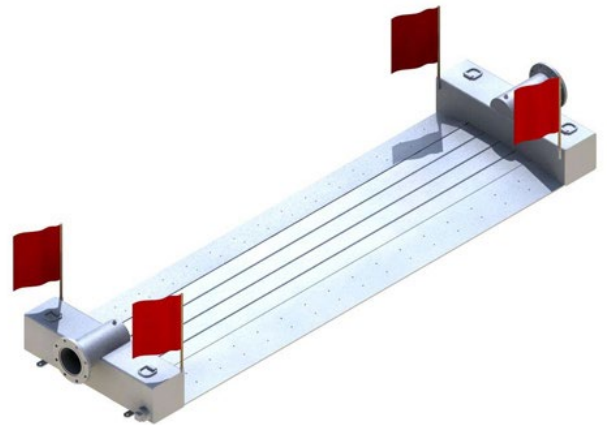
Part of the WORKSAFE™ family of products

Overview:

Keep pedestrian and vehicle traffic moving during your bypass by using our safety-focused Road Crossing. This galvanized steel is engineered to provide minimal head-loss when using on pumping projects. Each Road Crossing is manufactured to remain in compliance with federal bridge laws of 20,000 lbs. Single Axle.

Features:

- The Road Crossing requires full ground contact in the tire zone and allows for a working pressure up to 75 PSI.
- Sloped entrance and exit ramps.
- Designed for high flow rates
- 3" cleanouts/drains.

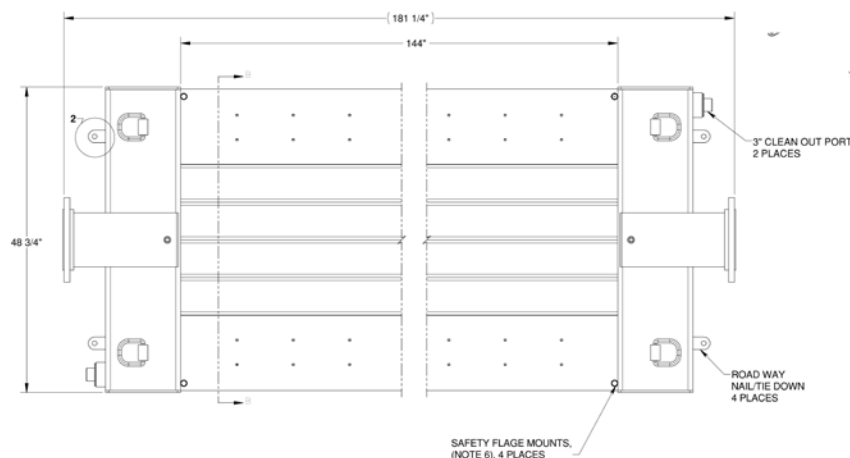


Specs:

Footprint	48.75" x 181.25"
Dry Weight	1,975 lbs.
Workable PSI	75
Vehicle Width Clearance	12 feet
Connection	8 inch flange

Accessories:

- Aluminum pipe and fittings
- Pressure gauges
- Wheel Wash system



PUMPS • TANKS • FILTRATION • PIPE • SPILLGUARDS

Rain for Rent is a registered trademark of Western Oilfields Supply Company. Features and specifications are subject to change without notice.

Liquid Ingenuity®
800-742-7246
rainforrent.com