

# Bag Filter

# BF1000

ASME

## Overview:

The BF1000 bag filter unit features one bag filter tank and utilizes eight 7" x 30" bag filters for superior filtration from 100 to 1 micron for flows up to 1000 GPM.

## Features:

- No moving parts
- Skid mounted
- Fitted with bleed valves and pressure gauges
- Chambers constructed of 304 Stainless Steel
- Stainless Steel inlet and outlet manifolds

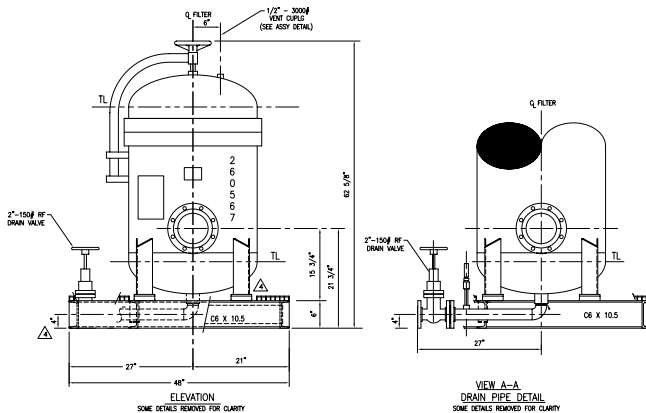


## Specs:

Max Flow	1000 GPM
Material	Stainless Steel
Max PSI	150 PSI
Dry weight	2000 lbs.
Footprint:	48" x 48"
Inlet x outlet	6" x 6" Flange

## Accessories:

- Spillguard
- Suction and Discharge Hoses



**PUMPS • TANKS • FILTRATION • PIPE • SPILLGUARDS**

Rain for Rent is a registered trademark of Western Oilfields Supply Company. Features and specifications are subject to change without notice.

**Liquid Ingenuity®**  
800-742-7246  
rainforrent.com