

Sewage and Trash Pump

DV300i

Overview:

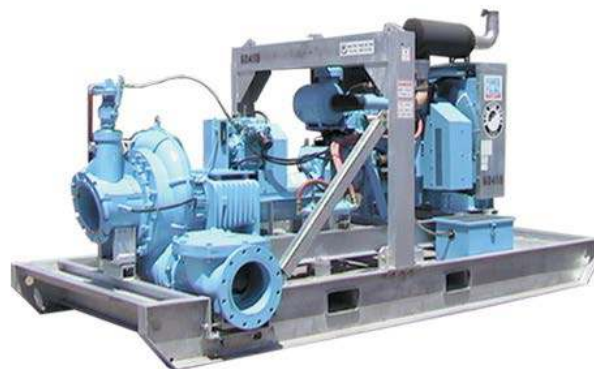
The 12" suction x 12" discharge self-priming centrifugal DV300i trash pump provides up to a maximum of 6,900 gallons per minute pumping and up to 197 feet of head. This pump is usually mounted on a skid with sound attenuation and features the standard PowerPrime Clean Prime Venturi priming system which allows it to run continuously, unattended and even run dry.

Features:

- Continuous self-priming
- Runs dry unattended
- 12 volt, electric start with auto-start capable control panel
- Flex coupled to diesel engine
- 24-hour minimum capacity fuel tank
- Compressor fitted to operate the air-ejector priming system
- Cast iron wet end with open impellers
- Replaceable wear plates
- SAE Mounted
- Suction lift up to 28ft.

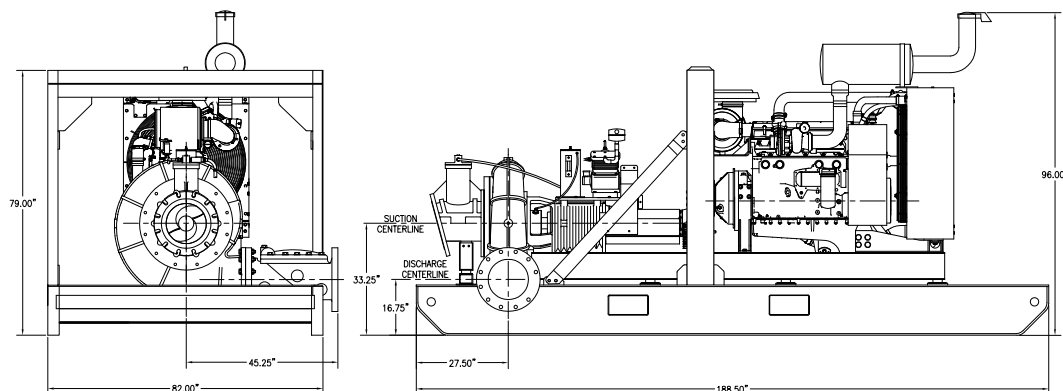
Specs:

Maximum Flow	6,900 GPM
Maximum Head	197 feet
Pump Size	12" x 12"
Maximum Solids Handling	3.5 inches
Dry weight	10,285 lbs.
Footprint: Trailer mounted model	188.5" x 82"
Fuel tank	250 gallon
Fuel consumption	8.9 gph @ 1,800 RPM



Accessories:

- Spillguard
- Suction and Discharge Hoses
- Fuel Nurse Tank
- VFD for electric driven models



PUMPS • TANKS • FILTRATION • PIPE • SPILLGUARDS

Rain for Rent is a registered trademark of Western Oilfields Supply Company. Features and specifications are subject to change without notice.

Liquid Ingenuity®
800-742-7246
rainforrent.com



Rain For Rent

CURVE: 01-0133-02-17

PUMP : DV-300i

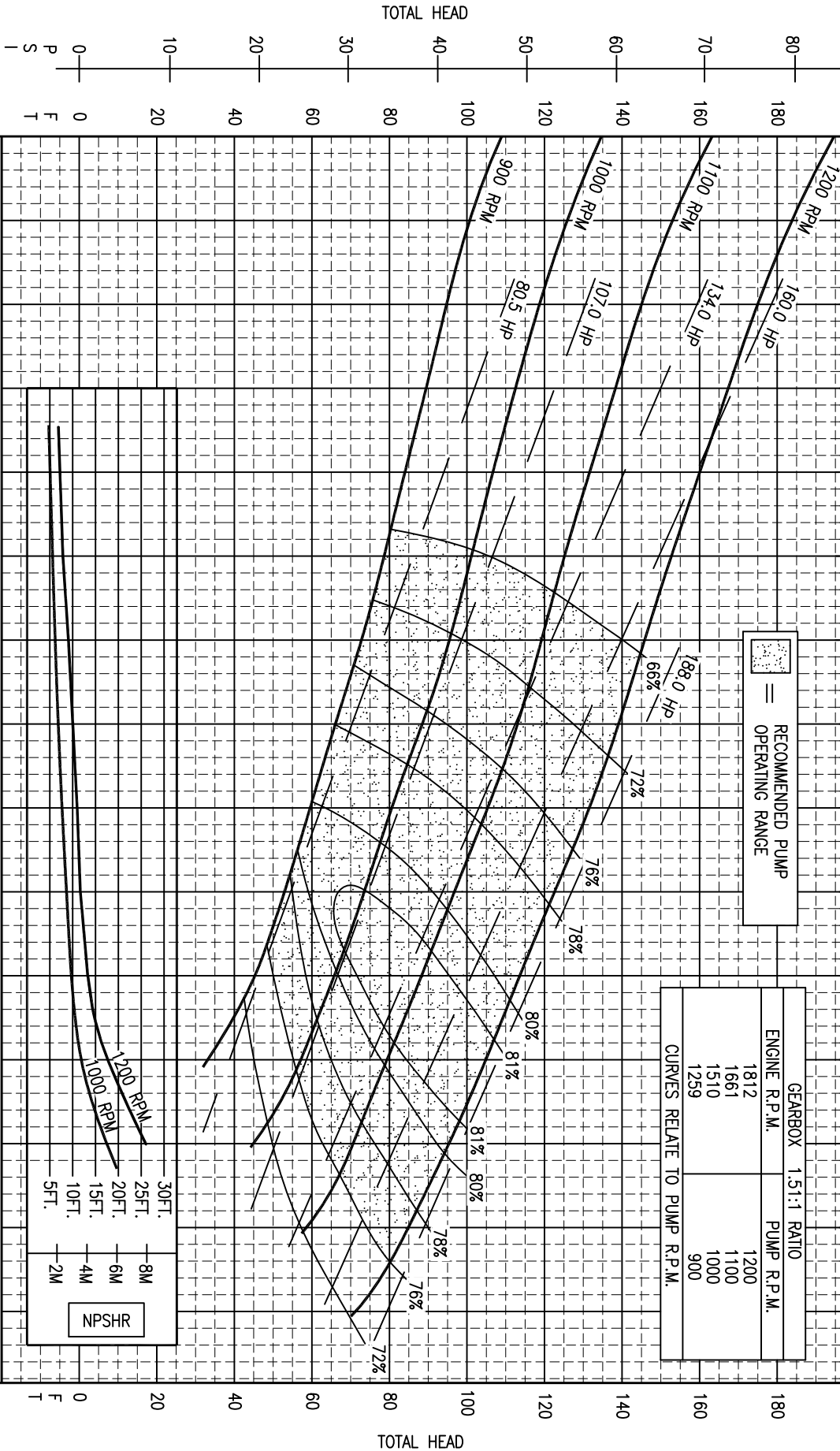
ALL INFORMATION CONTAINED IN OR DISCLOSED BY THIS DOCUMENT IS CONSIDERED CONFIDENTIAL AND PROPRIETARY BY RAIN FOR RENT. ALL DISCLOSURES OF DESIGN INFORMATION AND REPRODUCTION OF THIS DOCUMENT AND ALL SALES RIGHTS ARE EXCLUSIVELY RESERVED BY AND TO RAIN FOR RENT AND COMMUNICATION OF THIS INFORMATION TO OTHERS IS PROHIBITED WITHOUT THE PRIOR WRITTEN CONSENT OF RAIN FOR RENT

SUCTION	DISCHARGE	MAX. SPHERE	IMPELLER	IMPELLER	IMPELLER & WEAR RINGS
12"	12"	3.5"	OPEN	21.1"	316 S/S

= RECOMMENDED PUMP OPERATING RANGE

GEARBOX 1.5:1 RATIO	
ENGINE R.P.M.	PUMP R.P.M.
1812	1200
1661	1100
1510	1000
1259	900

CURVES RELATE TO PUMP R.P.M.



FLOW - CLEAR WATER PERFORMANCE (US GPM)

-PUMP PERFORMANCE CURVES DO NOT INCLUDE CHECK VALVE LOSSES
-POWER CURVES EXCLUDES AIR COMPRESSOR POWER CONSUMPTION

CONFIDENTIAL