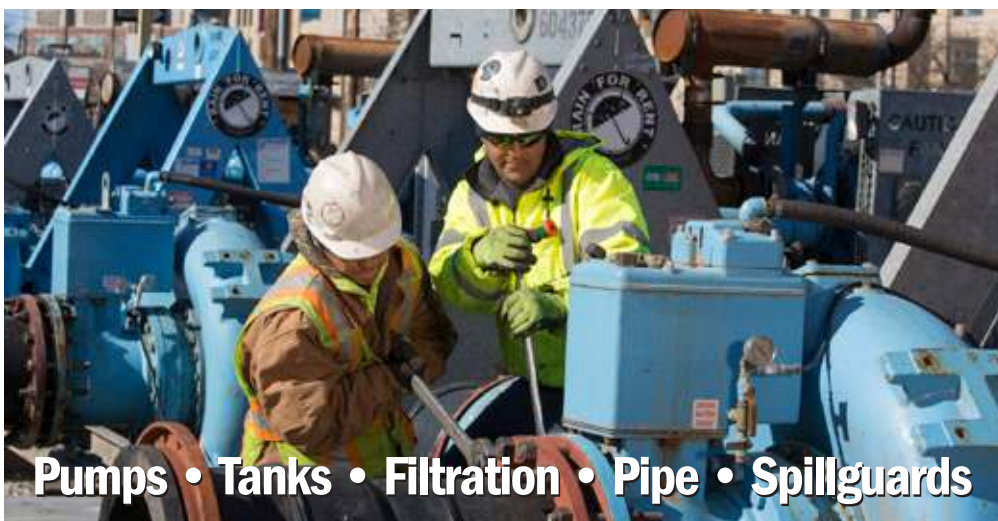





**Liquid Ingenuity®**

**Products and Services**



**Pumps • Tanks • Filtration • Pipe • Spillguards**



## Responsive, experienced, innovative

Rain for Rent is the leading provider of liquid handling solutions. From pumps, tanks, and filtration to pipe and hoses, we provide everything you need to keep your project on track. When you have a problem, we don't send salespeople; we send problem solvers. No other

liquid handling company has our breadth of experience, engineering capabilities, or commitment to safety and the environment. We take the worry off your shoulders so you can focus on your business and not on your liquid management problems.

## Engineering Expertise

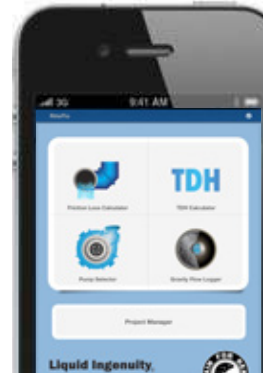
Rain for Rent's engineers design specific solutions for your clients' individual needs. Consistent, professional review of engineering data, flow requirements, friction loss, NPSH requirements and operating conditions ensure a safe and trouble-free system.



**rainforrent.com**

Visit us online to learn more about our products and services.

- Equipment catalog
- Project examples
- Store locator
- Full pump curves and specs
- Latest solutions
- Videos



## RiteFlo® - The mobile flow calculation tool engineers can count on

The free app includes a:

- Friction Loss Calculator
- TDH Calculator
- Pump Selector
- Gravity Flow Logger





Pumps built to make your job easier.

### Features

- Continuous self-priming
- Runs dry unattended
- Solids handling capabilities
- 24-hour fuel tank
- Suction lifts up to 28 feet
- Lifting bails
- Sound Attenuation
- Stainless Steel and CD4MU options

## DV Series – Dry Vacuum

## HH Series – High Head and Specialty Pumps



**DV80c**  
Size 4" x 3" 102x76 mm  
880 GPM 56 l/sec  
125 FT HEAD 38 m



**DV80m**  
Size 3" x 3" 76 x 76 mm  
630 GPM 40 l/sec  
94 FT HEAD 27 m



**DV100**  
Size 4" x 4" 102 x 102 mm  
700 GPM 44 l/sec  
100 FT HEAD 30 m



**HH80c**  
Size 3" x 3" 76 x 76 mm  
450 GPM 28 l/sec  
360 FT HEAD 110 m



**HH125c**  
Size 6" x 4" 152 x 102 mm  
1,524 GPM 96 l/sec  
355 FT HEAD 108 m



**HH150**  
Size 8" x 6" 203 x 152 mm  
2,300 GPM 145 l/sec  
319 FT HEAD 97 m



**HH160i**  
Size 8" x 6" 203 x 152 mm  
2,800 GPM 177 l/sec  
460 FT HEAD 140 m



**DV100c**  
Size 6" x 4" 152 x 102 mm  
1,450 GPM 91 l/sec  
165 FT HEAD 50 m



**DV150**  
Size 6" x 6" 152 x 152 mm  
2,200 GPM 138 l/sec  
157 FT HEAD 48 m



**DV150c**  
Size 6" x 6" 152 x 152 mm  
2,775 GPM 175 l/sec  
150 FT HEAD 46 m



**DV150i**  
Size 6" x 6" 152 x 152 mm  
2,750 GPM 173 l/sec  
195 FT HEAD 59 m



**HH200i**  
Size 8" x 8" 203 x 203 mm  
4,100 GPM 259 l/sec  
370 FT HEAD 113 m



**HH225c**  
Size 12" x 8" 305 x 203 mm  
5,400 GPM 341 l/sec  
405 FT HEAD 123 m



**HH325c**  
Size 12" x 10" 305 x 254 mm  
6,800 GPM 429 l/sec  
415 FT HEAD 126 m



**XH80c**  
Extra High Head  
Size 3" x 4" 76 x 102 mm  
700 GPM 44 l/sec  
830 FT HEAD 253 m



**SiteMax™**  
Size 4" or 6" 102 or 152 mm  
2,000 126 l/sec or  
3,000 GPM 189 l/sec  
155 FT HEAD 47 m or  
205 FT HEAD 62 m



**DV175c**  
Size 8" x 6" 203 x 152 mm  
2,900 GPM 183 l/sec  
295 FT HEAD 90 m



**DV200c**  
Size 12" x 8" 305 x 203 mm  
4,600 GPM 290 l/sec  
260 FT HEAD 79 m



**DV300i**  
Size 12" x 12" 305 x 305 mm  
6,900 GPM 435 l/sec  
197 FT HEAD 60 m



**XH100**  
Extra High Head  
Size 6" x 4" 152 x 102 mm  
1,250 GPM 79 l/sec  
605 FT HEAD 184 m



**XH150**  
Extra High Head  
Size 8" x 6" 203 x 152 mm  
2,350 GPM 148 l/sec  
605 FT HEAD 184 m



**XH150c**  
Extra High Head  
Size 8" x 6" 203 x 152 mm  
3,250 GPM 204 l/sec  
625 FT HEAD 190 m



**XHH125**  
Extreme High Head  
Size 6" x 6" 152 x 152 mm  
1,600 GPM 101 l/sec  
950 FT HEAD 290 m



**DV325c**  
Size 14" x 12" 356 x 305 mm  
8,500 GPM 536 l/sec  
220 FT HEAD 67 m



**DV350c**  
Size 14" x 14" 356 x 356 mm  
13,500 GPM 852 l/sec  
180 FT HEAD 55 m



**DV400c**  
Size 18" x 16" 457 x 406 mm  
16,000 GPM 1,009 l/sec  
200 FT HEAD 61 m



**DV600c**  
Size 30" x 24" 762 x 610 mm  
28,000 GPM 1,767 l/sec  
96 FT HEAD 29 m



**Hydraulic Pumps**  
Hydraulic Submersible  
Size 3" - 6" 76 - 152 mm  
19,000 GPM MAX 1,199 l/sec  
Up to 300 FT HEAD 91 m



**Plunger Pumps**  
Size 4" x 2" 102 x 51 mm  
186 GPM MAX 12 l/sec  
Up to 2,100 PSI



**Wellpoint Pumps**  
Wellpoint Pump  
Size 4" - 8" 102 x 203 mm  
975 GPM MAX 61 l/sec  
Up to 400 FT HEAD 122 m



**Submersible Pumps**  
Sewage and  
Dewatering Pumps  
4" - 12"

# Your best solution for liquid storage

## Steel tanks featuring

- Coated and uncoated interiors
- Full drain V bottoms
- Safety staircase

## Options

- Vapor tight
- Steam coils
- Manifolds
- Mixers

## Monitoring Options

- Radar level gauge
- Mechanical level gauge
- Telemetry
- Data loggers
- Stainless steel overflow flags

## WORKSAFE® Steel Tanks



**8,100-Gallon Mixer Tank**

3 paddle 5 horsepower & 4 paddle 10 horsepower mixers with individual controls



**21,000-Gallon Bi-Level Tank**

Coated or uncoated



**18,100-Gallon Weir Tank**

Over and under weirs  
Three hatches for easy cleaning



**21,000-Gallon Stainless Steel Tank**

Constructed of 304L Stainless Steel  
Chemical liquid storage



**21,000-Gallon Flat Top Tank**

Available with external or internal manifolds



**16,000-Gallon Double Wall Tank**

Extra environmental security



**18,100 & 21,000-Gallon Open Top Tank**

Open top for ease of viewing/cleaning



**16,000-Gallon Gas Buster Tank**

Open-top diffuser tank



**16,800-Gallon Upright Tank**

Slope and cone bottom for easy cleaning



**LakeTank®**

B-16, 16,000 BBL, 100' Diameter  
B-24, 24,000 BBL, 125' Diameter  
B-40, 40,000 BBL, 160' Diameter

## Poly tanks featuring

- Superior chemical resistance
- Lightweight
- Sloped and domed floors for easy cleaning
- Safety ladder
- Integrally Molded Flanged Outlet (IMFO)

## Options

- Level Gauges
- Spillguards
- Safety Products

## EZ KLEEN® Polyethylene Tanks



**600-Gallon**



**4,400-Gallon**

Safe Tank  
OR-1000™



**4,900 & 6,900-Gallon**

Standard Poly and  
OR-1000™ Acid Tanks



**4,900 & 6,900-Gallon**

Double Wall Tanks



**12,000-Gallon**

Water Tower

## Filtration Solutions

- Meet discharge requirements
- Process water for re-use applications
- Remove free and dispersed, non-emulsified oil
- Remove hydrocarbons from water
- Remove settleable solids
- Pre-filter for GAC (Granulated Activated Carbon)
- Remove large solids from liquids
- Easy cleaning
- Cost-effective
- Aid in meeting discharge requirements
- Carbon and Stainless Steel options
- Bag, cartridge, and media options between 0.1-200 micron



- Filtration solution using eco-friendly polymers: natural, plant-based, or hybrid
- Treats a wide variety of pollutants and contaminants including total suspended solids (TSS), algae hydrocarbons, heavy metals, oils and organic compounds.
- Successfully meet discharge standards

## Oil/Water Separators



**OWS100**  
100 GPM 6 l/sec



**OWS200**  
200 GPM 13 l/sec



**OWS400**  
400 GPM 25 l/sec

## Containers



**ROLL-OFF**  
20, 25, 30 Yard 15, 19, 23 m<sup>3</sup>



**VACUUM ROLL-OFF**  
25 Yard 19 m<sup>3</sup>



**INTERMODAL ROLL-OFF**  
25 Yard 19 m<sup>3</sup>

## Container Filters



**VACUUM FILTER**  
25 Yard 19 m<sup>3</sup>



**FILTER BOX**  
25 Yard 19 m<sup>3</sup>



**WEIR BOX/TUBE SETTLER**  
25 Yard 19 m<sup>3</sup>

## Bag or Cartridge Filters 50 – 6,000 GPM



**BF100**  
100 GPM 6 l/sec



**BF200**  
200 GPM 13 l/sec



**BF400**  
400 GPM 25 l/sec



**BF1000**  
1,000 GPM 63 l/sec



**BF2000**  
2,000 GPM 126 l/sec



**BF4000**  
4,000 GPM 252 l/sec



**BF6000**  
6,000 GPM 379 l/sec



**PF50**  
50 GPM 3 l/sec



**PF200**  
200 GPM 13 l/sec



**PF400**  
400 GPM 25 l/sec



**PF1000**  
1,000 GPM 63 l/sec

## Media Filters 70– 1,960 GPM



**18-2**  
70 GPM 4 l/sec



**24-3**  
189 GPM 12 l/sec



**36-3**  
425 GPM 27 l/sec



**48-2**  
500 GPM 32 l/sec



**48-4**  
1,000 GPM 63 l/sec

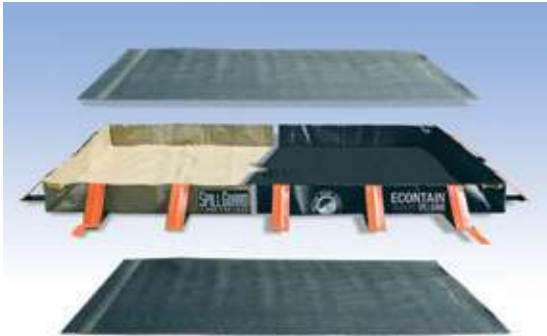


**54-4**  
1,590 GPM 100 l/sec



**60-4**  
1,960 GPM 124 l/sec

## Spillguards



Spillguards, used simultaneously with Hose Bridges, protect the environment from costly spills and prevent damage to hoses.

- Complete systems from: 4' x 4' to 50' x 50'  
Custom sizes available
- One-piece construction, reinforced seams
- Lightweight, portable, installs quickly
- Puncture resistant, protective mats, side wall supports
- Modular units available to fit any configuration
- Highwall units available for 110% secondary containment

### Compatibility

	Standard Acid	
■ Sulfuric Acid (up to 50%)	NA	A
■ Sodium Hydroxide (up to 25%)	A	A
■ Hydrochloric Acid (up to 50%)	NA	A
■ Diesel Fuel	R	R
■ Gasoline	R	NA
■ Water	A	A
■ Fertilizer Solution	A	A
■ Clorox (Sodium Hypochlorite)	A	A
■ Crude Oil	R	R
■ Hydraulic Fluid (mineral)	R	R

**A** = Approved Application  
**NA** = Not Approved  
**R** = Requires Engineering Review

\* Contact your sales representative for a complete list of compatible fluids.

### Temperature Table

	Low Temp	High Temp
<b>Acid</b> =	-20°F/-29°C	160°F/71°C
<b>Standard</b> =	-40°F/-40°C	160°F/71°C

## Safety Products

### PipeStax®



Modular and durable pipe support blocks to stabilize pipe up to 12" in diameter. U.S. Patent # 8,807,492

### PipeStax®XL



Modular and durable pipe support blocks for large pipe applications up to 24" in diameter. U.S. Patent # 8,807,492

### RampLox®



Modular and durable temporary pipe and hose ramps for pedestrian or vehicle traffic. Protects pipe and hose up to 5" in diameter. U.S. Patent # D725,748

### HoseTrax™



HoseTrax™ keeps multiple pipe, hose, and conduit (up to 5" diameter) organized on the jobsite. US & International Patents Pending.

## SolidGround® Traction Mats



Help prevent slips, trips and falls with Rain for Rent's SolidGround® Traction Mats. These durable mats provide a stable surface for increased traction on muddy or sandy soil and protect landscapes from damage. SolidGround® Traction Mats prevent punctures and damage to spillguards.

- Withstands vehicle weights up to 60 tons
- Portable
- 4' x 8' - recycled polyethylene
- Durable

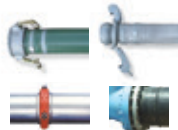
## FreezeSentry® Flameless and Hydronic Heaters

Rain for Rent's FreezeSentry® Heat Systems protect vital oilfield equipment against freezing so you can keep working even in the harshest weather. FreezeSentry® hydronic heaters heat rigs, tanks, wellheads, and frac or production lines. The hydronic heater is placed outside the ignition/exclusion zone while hoses run from the unit to the desired equipment. The result is safe and efficient heating.



EG-300	E-3000	E-5000	FH-1000
17,000 BTU/hr Protects wellheads, pumps, piping and filtration systems	321,000 BTU/hr Heats up to 6 tanks	714,000 BTU/hr Heats up to 12 tanks	1,000,000 BTU/hr to be split between two targets

## Pipe, pipe fittings, hoses, suction screens



Pipe	Fittings	Hose	Suction Screens
Aluminum, HDPE, and Steel	Camlock, Bauer, Victaulic, and Flange	Suction and Discharge	Steel and Polyethylene

## Instrumentation



PWQMS	Alarm Agent	AnDRU Box	Radar Gauge
Measure, monitor water turbidity, pH adjusts polymer dosage	Wirelessly monitors pumps, tanks and filtration equipment	Control pumps and alarms	Measures liquid levels

## Accessories



**Magnetic Flow Meter**  
Measures flows from 255 to 43,000 GPM



**Road Crossings**  
8", 12" 18" Available  
12' & 20' Wide



**Generators with Light Towers**  
8 kW & 20 kW  
4-1,000 watt lamps

## Conline Wheel Wash Systems



Dirt and mud tracked out from jobsites onto roadways is a public safety issue and a clean-up expense. It has also become a major factor in meeting environmental regulations and bid specs. Rain for Rent's Conline Wheel Wash Systems from Moby Dick provide an efficient and cost-effective solution.

Advanced spray pattern technology cleans truck tires quickly and thoroughly without distorting driver visibility, ensuring compliance with regulators and eliminating the risk of a shutdown. *Depend on Rain for Rent to keep your trucks' tires clean and your projects running smoothly.*



### Standard Features:

- Automatic on-off operation via optical sensor.
- Easy-to-clean, spray nozzles.
- Water recycling with flocculent dosing and automatic solids removal via scraper conveyor.
- Two pump redundant design ensures water supply to wash platform.
- Hot dipped galvanized heavy-gauge wash platform handles 33,069 lbs per axle.
- Can service 1 to 300 trucks per day.



Rain for Rent's partner, Portadam™ offers temporary cofferdams on your jobsite. The Portadam system creates temporary, portable cofferdams for use in construction, flood protection, and in-water inspection projects. Compared to earthen dams, sandbags, home-made contractor methods, sheet piling or water filled bladders, the Portadam system provides significant environmental and cost benefits. Mitigate project risk by relying on two trusted providers.



### Applications:

- Pipeline River Crossings/Pipeline Repair
- Dam Rehabilitation/Construction
- Bridge Rehabilitation/Construction
- Boat Ramp Rehabilitation/Construction
- Holding Basins Maintenance and Construction
- Flood Control and Prevention

## Industries Served



Water is fundamental to our existence, flowing throughout our daily lives. It can be an asset or a liability. Customers trust Rain for Rent because they want the peace of mind from knowing their liquids are being managed safely so they can focus on their core business.



**Agriculture**



**Construction**



**Government**



**Mining**



**Oil & Gas**



**Refineries**



**Pipelines**



**Environmental**



**Power**



**Manufacturing**

# EXPERTISE YOU CAN TRUST



Rain for Rent is known for our ability to tackle complex challenges swiftly and cost effectively. Executives trust us with the big jobs when no one else can do them, and they choose us for the small jobs because we get them done right, the first time.



**Bypass Pumping**

*Our pumps divert flows from small to extra large so you can focus on your project.*



**Dewatering**

*Use our wellpoint, deepwell, or submersible pumps too keep groundwater off your site.*



**Filtration**

*Meet your discharge requirements and avoid costly fines and delays with our variety of filtration options.*



**Water Transfer**

*Rely on our pumps and pipe to move water no matter the distance or elevation change.*



**Liquid Storage**

*Our diverse fleet of 21,000-gal tanks, poly tanks, or LakeTanks® help store your liquids no matter the volume.*



**Dust Control**

*Keep dust levels low to prevent fines or air pollution using our dust suppression products.*



**Spill Containment**

*Eliminate costly fines, meet regulations, and protect the environment with Spillguards under equipment.*



**Wheel Wash**

*Wheel Wash systems are ideal on remediation or any jobsite needing efficient and cost effective track-out prevention.*



**Jobsite Services**

*HDPE certified fusion technicians, pump watch, installation and removal crews help your job smoothly.*



**Safety Products**

*Upgrade your jobsite standards with our variety of innovative and versatile safety products.*



**Liquid Ingenuity.**

800-742-7246  
rainforrent.com

**PUMPS • TANKS • FILTRATION • PIPE • SPILLGUARDS**  
Rain for Rent is a registered trademark of Western Oilfields Supply Company.  
Features and specifications are subject to change without notice.