

Extra High Head Pump

XH100

Overview:

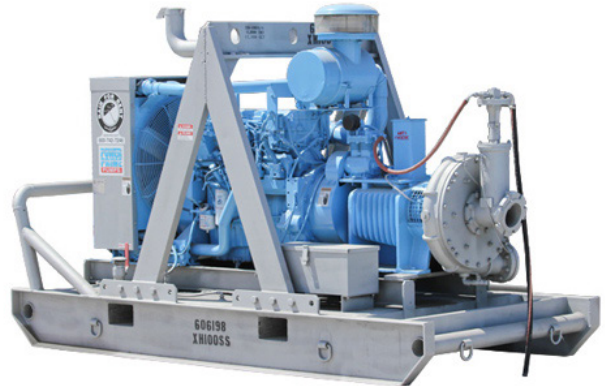
The 6" suction x 4" discharge self-priming centrifugal XH100 extreme high head pump provides up to a maximum of 1,250 gallons per minute pumping and up to 605 feet of head. This pump is usually mounted on a skid and features the standard PowerPrime Clean Prime Venturi priming system which allows it to run continuously, unattended and even run dry.

Features:

- Continuous self-priming
- Runs dry unattended
- Suction lift to 28 ft.
- Stainless steel, CD4MCu pump options
- Pedestal mounted
- Flex coupled to diesel engine
- 18-hour run time max with fuel tank
- 12 volt electric start control panel
- Compressor venturi automatic priming system
- Stainless steel volute with 5 vane open impeller
- Replaceable wear plates

Specs:

Maximum Flow	1,250 GPM
Maximum Head	605 feet
Pump Size	6" x 4"
Maximum Solids Handling	0.875 inches
Dry weight	9,800 lbs.
Footprint: Trailer mounted model	144" x 66" x 96"
Fuel tank	200 gallon
Fuel consumption	11.1 gph @ 1,800 RPM



Accessories:

- Spillguard
- Suction and Discharge Hoses
- Fuel Nurse Tank



PUMPS • TANKS • FILTRATION • PIPE • SPILLGUARDS

Rain for Rent is a registered trademark of Western Oilfields Supply Company. Features and specifications are subject to change without notice.

Liquid Ingenuity®
800-742-7246
rainforrent.com



Rain For Rent

CURVE: 01-0133-02-21
 PUMP : XH-100

SUCTION 6"

DISCHARGE 4"

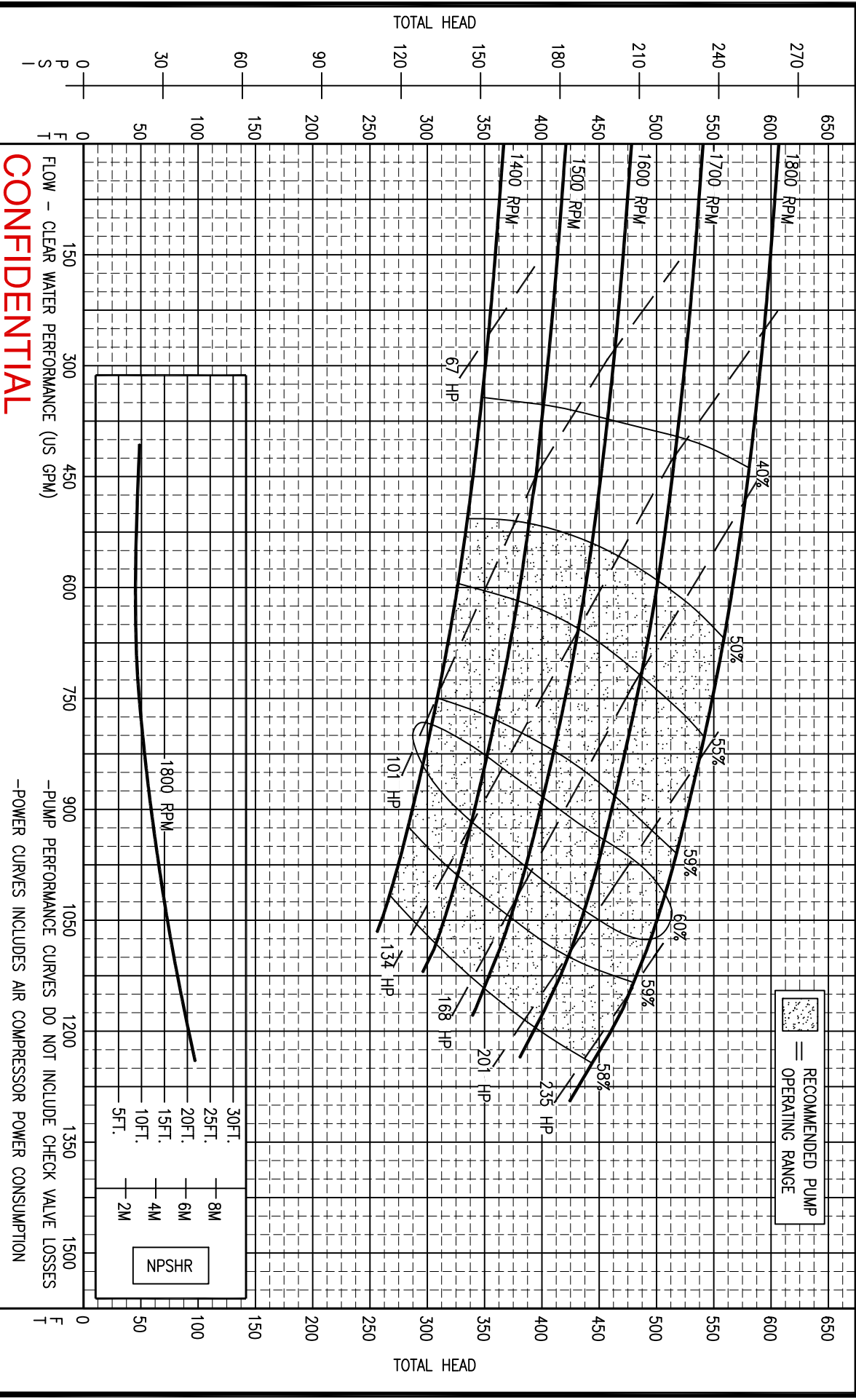
MAX. SPHERE .86"

IMPELLER CLOSED

IMPELLER 22.05"

IMPELLER & WEAR PLATES 316 S/S

ALL INFORMATION CONTAINED IN OR DISCLOSED BY THIS DOCUMENT IS CONSIDERED CONFIDENTIAL AND PROPRIETARY BY RAIN FOR RENT. ALL DISCLOSURES OF DESIGN INFORMATION AND REPRODUCTION OF THIS DOCUMENT AND ALL SALES RIGHTS ARE EXCLUSIVELY RESERVED BY AND TO RAIN FOR RENT AND COMMUNICATION OF THIS INFORMATION TO OTHERS IS PROHIBITED WITHOUT THE PRIOR WRITTEN CONSENT OF RAIN FOR RENT



CONFIDENTIAL

FLOW - CLEAR WATER PERFORMANCE (US GPM)
 -PUMP PERFORMANCE CURVES DO NOT INCLUDE CHECK VALVE LOSSES
 -POWER CURVES INCLUDES AIR COMPRESSOR POWER CONSUMPTION