

Extra High Head Pump

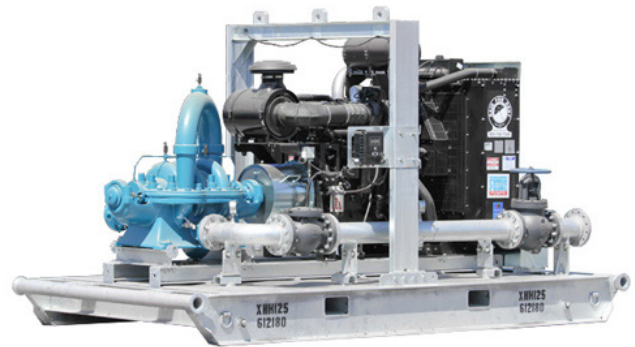
XHH125

Overview:

The 6 inch (152.4mm) XHH125 Clean Prime™ is an extremely robust multi-stage split-case extreme high head pump, capable of flow rates to 1600 GPM, total dynamic heads to 950 feet (289.6M), and solids handling capabilities up to 0.625 inches (15.9mm) in diameter. The XHH125 also features the PowerPrime™ Pumps high pressure Tungsten vs. Silicon Carbide mechanical seal. All of these features come standard on a compact skid for convenient use.

Features:

- 3 stage
- Horizontally split case pump
- Equipped with 6" globe valve for throttling

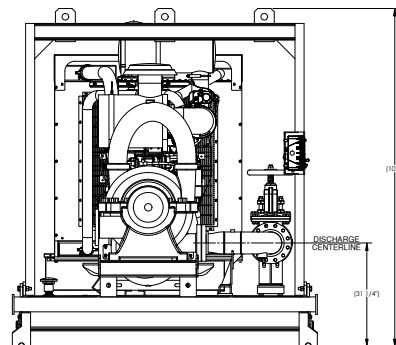
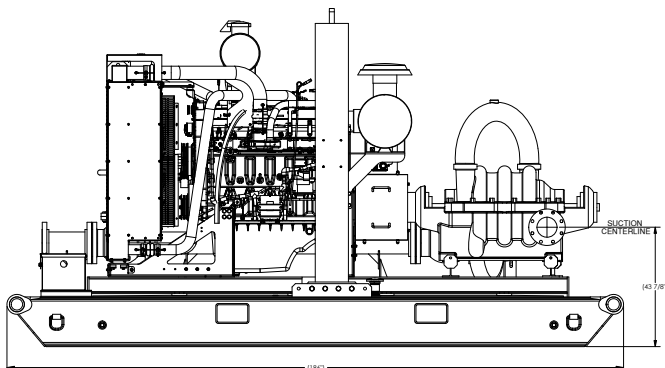


Specs:

Maximum Flow	1,600 GPM
Maximum Head	950 feet
Pump Size	6" x 5"
Maximum Solids Handling	0.625 inches
Dry weight	13,040 lbs.
Footprint	186" x 92"
Fuel Tank	370 Gallon
Fuel Consumption	13.9 gph @1,800rpm

Accessories:

- Spillguard
- Suction and Discharge Hoses
- Fuel Nurse Tank



PUMPS • TANKS • FILTRATION • PIPE • SPILLGUARDS

Rain for Rent is a registered trademark of Western Oilfields Supply Company. Features and specifications are subject to change without notice.

Liquid Ingenuity
800-742-7246
rainforrent.com



Rain For Rent

CURVE: 01-0133-02-59

PUMP : XHH-125

SUCTION 6"

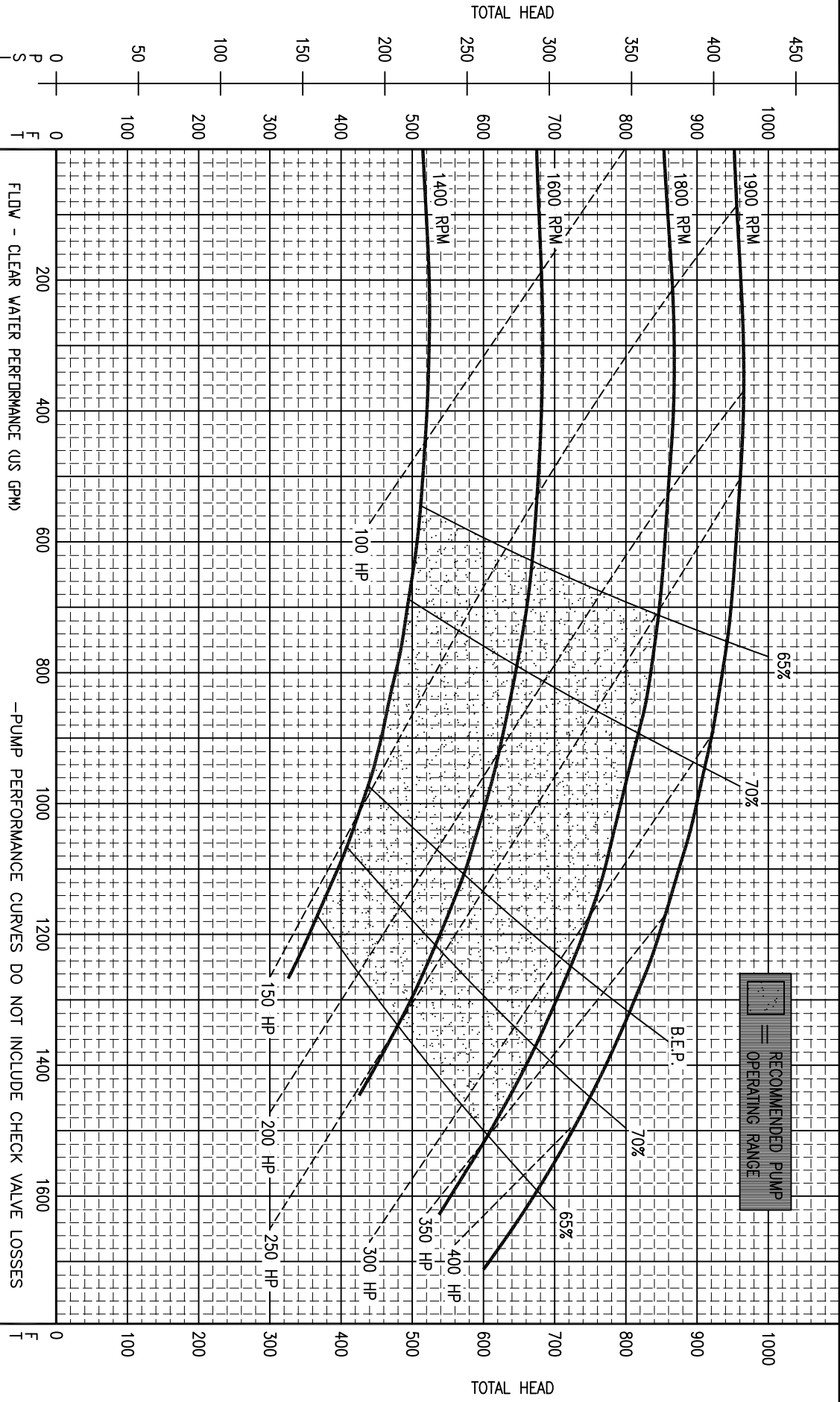
DISCHARGE 5"

MAX. SPHERE 0.625"

STAGE 3

IMPELLER 16.15"

ALL INFORMATION CONTAINED IN OR DISCLOSED BY THIS DOCUMENT IS CONSIDERED CONFIDENTIAL AND PROPRIETARY BY RAIN FOR RENT. ALL DISCLOSURES OF DESIGN INFORMATION AND REPRODUCTION OF THIS DOCUMENT AND ALL SALES RIGHTS ARE EXCLUSIVELY RESERVED BY AND TO RAIN FOR RENT AND COMMUNICATION OF THIS INFORMATION TO OTHERS IS PROHIBITED WITHOUT THE PRIOR WRITTEN CONSENT OF RAIN FOR RENT



RECOMMENDED PUMP OPERATING RANGE

FLDWF - CLEAR WATER PERFORMANCE (US GPM)

-PUMP PERFORMANCE CURVES DO NOT INCLUDE CHECK VALVE LOSSES
-POWER CURVES DO NOT INCLUDE PRIMING SYSTEM POWER CONSUMPTION

CONFIDENTIAL