

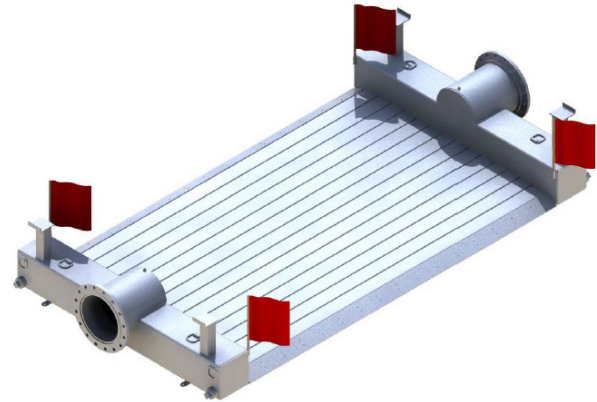
Road Crossing

18" x 24'

Part of the WORKSAFE™ family of products

Overview:

Keep pedestrian and vehicle traffic moving during your bypass by using our safety-focused Road Crossing. This galvanized steel is engineered to provide minimal head-loss when using on pumping projects. Each Road Crossing is manufactured to remain in compliance with federal bridge laws of 20,000 lbs. Single Axle.



Features and Benefits:

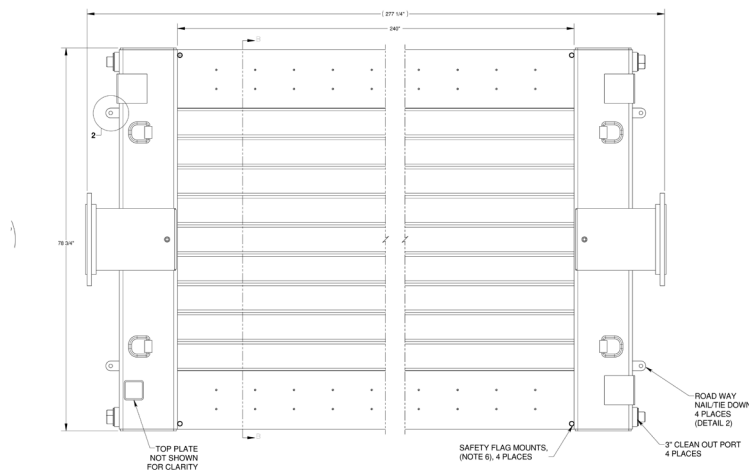
- The Road Crossing requires full ground contact in the tire zone and allows for a working pressure up to 75 PSI.
- Sloped entrance and exit ramps.
- Designed for high flow rates
- Four 3" cleanouts/drains
- Eight weld-on D-Rings
- Two 1/2" Pressure Gauge Ports

Specs:

Footprint	95" x 189.75"
Dry Weight	7,200 lbs.
Workable PSI	75
Vehicle Width Clearance	12 feet
Connection	18 inch flange

Optional Accessories & Equipment:

- Aluminum pipe and fittings
- Pressure gauges
- Wheel Wash system



PUMPS • TANKS • FILTRATION • PIPE • SPILLGUARDS

THE SPECIFICATIONS CONTAINED IN THIS SHEET ARE OPERATING GUIDELINES AND ARE INTENDED TO BE GENERAL REPRESENTATIONS OF EQUIPMENT CAPABILITIES. ACTUAL PERFORMANCE WILL VARY BASED UPON SYSTEM APPLICATION, AGE OF EQUIPMENT, MANUFACTURER, AND OPERATION.

Liquid Ingenuity®
800-742-7246
rainforrent.com